

Louis R. Cross  
 23682 Road 15½  
 Chowchilla, CA 93610  
 559 665-1001

O Scale  
 First With Accurately  
 Scaled Rail  
 Since 1963 50 Years



## RAIL- Custom Drawn to Prototype Cross Sections



Code	148	138	125	100	81/83
Weight	132-136#	112-130#	90-100#	75#	52#
	AREA	AREA	AREA	ASCE	AREA
Nickel silver /100'	\$115.00 (soon)	see note 1	\$99.00 (soon)	\$99.00 (soon)	\$55.00
Steel /100'	\$85.00	see note 2	\$65.00	\$57.00	n/a
	(Packaged in 99' bundles)				

Note 1: Code 138 rail is scaled after SP/UP 112 lb/yd and PRR/NKP 130 lb/yd rail installed in the 1920-1950 era

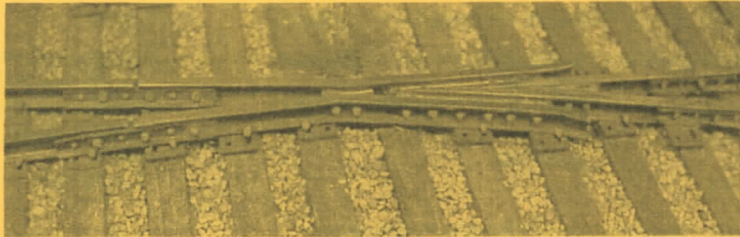
Note 2: Rail length is in multiples of 39 scale feet.

In 48¼" lengths (5 - 39' lengths) 24 pieces (97'-6" of rail) nickel silver \$73.00, steel \$44.00

In 68¼" lengths (7 - 39' lengths) 17 pieces (96'-6" of rail) nickel silver \$73.00, steel \$44.00

## Turnout and Crossing Parts

NOTE: All track detail parts are Highly Detailed Nickel Silver Investment Castings in Lead-free Nickel Silver



Typical Bolted Frog



FRB48-8

FB48-6	Frog, Bolted Type #6	Code 148 rail	\$ 12.00
FB48-7	Frog, Bolted Type #7	Code 148 rail	\$ 12.00
FB48-8	Frog, Bolted Type #8	Code 148 rail	\$ 12.00
FB48-10	Frog, Bolted Type #10	Code 148 rail	\$ 12.00
FRB48-8	Frog, Railbound #8	Code 148 rail	\$ 12.00
FRB48-10	Frog, Railbound #10	Code 148 rail	\$ 12.00
FB25-5	Frog, Bolted Type #5	Code 125 rail	\$ 12.00
FB25-6	Frog, Bolted Type #6	Code 125 rail	\$ 12.00
FB25-7	Frog, Bolted Type #7	Code 125 rail	\$ 12.00
FB25-8	Frog, Bolted Type #8	Code 125 rail	\$ 12.00
FRB25-8	Frog, Railbound #8	Code 125 rail	\$ 12.00
FB10-5	Frog, Bolted Type #5	Code 100 rail	\$ 12.00
FB10-6	Frog, Bolted Type #6	Code 100 rail	\$ 12.00

## Turnout and Crossing Parts

GR48	Guard Rails	Code 148	\$ 7.50 / pr.
GR48-2	Guard Rails / Tie Plates	Code 148	\$ 12.00 / pr.
GR25	Guard Rails	Code 125	\$ 7.50 / pr.
GR10	Guard Rails	Code 100	\$ 5.00 / pr.



GR48

P48-16	Switch Points, 16'-6"
P48-20	Switch Points, 20'
P25-10	Switch Points, 10'
P25-16	Switch Points, 16'-0"
P25-16-6	Switch Points
P25-18	Switch Points, 18'
P10-12	Switch Points, 12'

(Above sets require no filing)

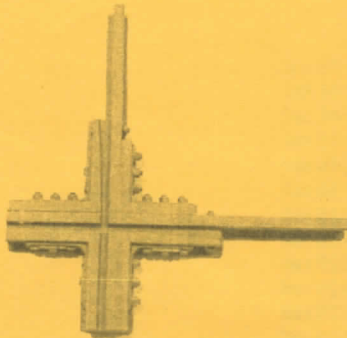
Code 148	\$ 11.00 / pr.
Code 148	\$ 11.00 / pr.
Code 125	\$ 11.00 / pr.
Code 125	\$ 11.00 / pr.
Code 125	\$ 14.00 / pr.
Code 125	\$ 11.00 / pr.
Code 100	\$ 11.00 / pr.



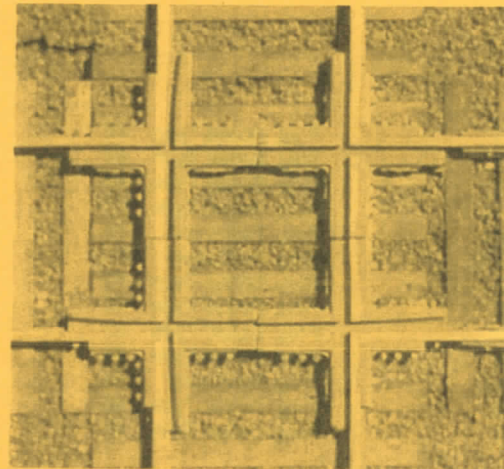
SSP48	Slip Switch, End points	Code 148	\$40.00 / set of 4
MP48-8	Movable center points, #8 slip switch or 7° x-ing	Code 148	\$18.00 / set of 4
SSP25	Slip Switch, End Points	Code 125	\$40.00 / set of 4
MP25-8	Movable center points, #8 slip switch or 7° x-ing	Code 125	\$18.00 / set of 4

PM25-1	Point/Mate set for Street Trackage (left or right)	Code 125	\$25.00 / set of 4
CR48-90	Crossing, 90 °	Code 148	\$30.00 / set of 4
CR48-15	Crossing, 15 °, or #8 double crossover diamond	Code 148	\$49.00 / set of 4
NBW	Nut-Bolt-Washer Assy for above		\$25.00 / 16 pcs.
CR25-7**	Dbl. Slip Switch Center frog (soon)	Code 125	\$24.00
TR	Throw Rod, Insulated, to tie switch points		\$ 4.50 / set

\*\*Will eliminate use of 4 pr. Of center points. Makes building of Dbl Slip Switch simple.



CR48-90



## Switch and Track Parts

Super detail investment castings

### Rail Braces

RB48	With tie plate integral, Code 148	12 / \$ 9.00
RB25	With tie plate integral, Code 125	12 / \$ 9.00
RB10	With tie plate integral, Code 100	12 / \$ 9.00
RB48-2	With out tie plate, Code 148	12 / \$ 7.00
RB25-2	With out tie plate, Code 125	12 / \$ 7.00
RB10-2	With out tie plate, Code 100	12 / \$ 7.00

### Tie Plates

TPC1	Tie plate 14" canted, plastic, for Code 148 or Code 125 rail	200 / \$ 9.50
TPF2	Tie plate, 14" flat, plastic, for Code 148 or Code 125 rail	200 / \$ 9.50
TPF3	Tie plate, 10" flat, plastic, for Code 100 rail	200 / \$ 9.50
TPF4	Tie plate, 24" flat, plastic, for turnouts, Code 148 or Code 125	48 / \$ 5.50



### Gauge Plates

GP48	Gauge plate, 8 piece set for one turnout, Code 148	1 set / \$ 7.50
GP25	Gauge plate, 8 piece set for one turnout, Code 125	1 set / \$ 7.50
GP10	Gauge plate, 8 piece set for one turnout, Code 100	1 set / \$ 7.50

### Switch Stands

SSJ	Switch Stand, San Juan Car Co., non-op, plastic, 1 high, 1 low	1 set / \$ 3.95
SSBS53	Switch Stand, Bethlehem Steel #53, non-op, brass, low	1 kit / \$ 6.50
NBC48	Nut/Bolt/Washer castings (for 45° crossing, adjustable)	1 set / \$ 30.00
CIGT01	Caboose Industries Ground Throw	1 ea. / \$ 4.00

### Rail Joiners

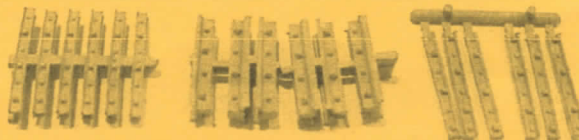
*Rail joiners are available for Code 148 and Code 125 rail and come in three styles;*

*Investment cast nickel-silver slip-on with all nut and bolt detail, order **NJ**,*

*Slip-on plastic for insulated joints, order **IJ**,*

*Cement-on plastic for applying to plain rail to simulate joint bars, order **CJ**.*

NJ48	Joiners, Code 148, slip-on nickel-silver	12 / \$ 10.00
NJ25	Joiners, Code 125, slip-on nickel-silver	12 / \$ 10.00
IJ48	Joiners, Code 148 slip-on plastic, insulating	12 / \$ 4.00
IJ25	Joiners, Code 125, slip-on plastic, insulating	12 / \$ 4.00
CJ48	Joiners, Code 148, plastic, cement-on	24 / \$ 3.50
CJ25	Joiners, Code 125, plastic, cement-on	24 / \$ 3.50
CJ10	Joiners, Code 100, plastic, cement-on	30 / \$ 3.50
CJB125	Compromise Joint Bars Code 148/138 to Code 125	6 pr. / \$12.00
CJB100	Compromise Joint Bars Code 100 to Code 125	6 pr. / \$12.00



## TIES

Cut from Sugar Pine

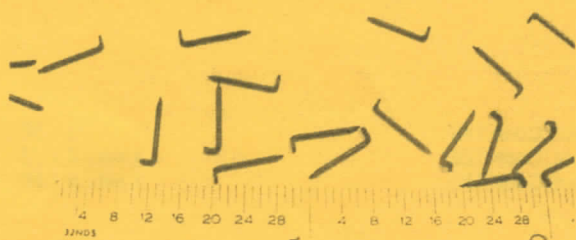
T 8-6	Ties, wooden, scale 7"x9", length 8'6"	750 / \$23.95
T 9-0	Ties, wooden, scale 7"x9", length 9'0"	750 / \$23.95
T 16-6	Ties, wooden, scale 7"x9", length 16'6"	100 / \$ 7.00
TT 8-6	Ties, wooden, scale 4"x9", length 8'6"	750 / \$23.95
TT 9-0	Ties, wooden, scale 4"x9", length 9'0"	750 / \$23.95
TT 16-6	Ties, wooden, scale 4"x9", length 16'6"	100 / \$ 7.00
TSK	Ties, wooden, turnout kit, 58 ties pre-cut, scale 7"x9" (Builds one (1) only #5 - #8 turnout)	1/ \$ 7.00

## TRACK SPIKES

.025" dia. x 1/4" long

Blackened with very sharp points

With approximately 30 ties per foot and four spikes per tie, 120 spikes would be required for each foot of track. By spiking every other tie, only 60 spikes per foot would be needed. Orders may be in any 1/4 or 1/2 oz. combinations. The 10 oz. price is good only for that weight.



Weight	Approx .Qty.	Price
1/2 oz.	800	\$ 6.25
3 oz.	4800	\$37.50
5 oz.	8000	\$62.50
10 oz.	16,000	\$91.50

PCF	Passenger Car Floors, 1/4" thick x 21 1/4"	1 ea. \$ 4.00
PCR	Passenger Car Roofs, Streamline, Basswood 21 1/4"	1 ea. \$ 10.00
TG-1	Passenger Car Tailgates	Pair \$ 3.95

For an excellent book on *Right-O-Way* products, obtain a copy of:

*Detailing Track* authored by Mike Cougill and published by *O Scale Trains* magazine

Price \$24.95 including P&H.

### Shipping Information

Shipping Charges for Rail: \$7.00 for 1st 99', \$2.00 each additional 99' Please add \$4.60 packing charge for all hardware orders. California, add 7.5% sales tax.  
Give street address for FedEx delivery.