



3828 St. Joseph Court
Lake Station, IN 46405

Made in the U.S.A. O scale list 2014

Diesel Parts

DL-1 Armstrong bracket (bolster) for Atlas F-9 pr/ \$2.95
DL-2 Freight pilot for Atlas F-9 \$6.95

Electric Loco Parts

EL-1 South Shore steelecab sideframes 4/\$11.95
EL-2 Heavy electric sideframes 10 ft. whlbs 4/\$17.95

Traction Parts

ET-1 Double arch window 2/\$1.75
ET-2 Large single arch window 2/\$1.25
ET-3 Medium single arch window \$1.10
ET-4 Small single arch window \$.95
ET-5 Oval window \$.75
ET-6 strap step / brace \$.75
ET-7 Train door \$1.10
ET-8 Side vestibule door arch top \$1.25
ET-9 Baggage door arch top \$1.35
ET-10 South Shore battery box orange cars \$1.35

Detail parts, kits

1001 9" turret lathe kit \$19.95
1002 6" turret lathe kit \$14.95

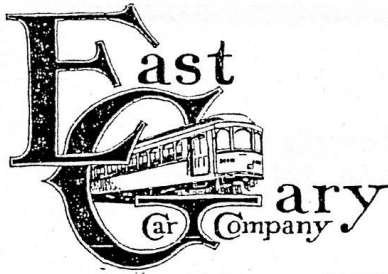
All parts cast metal. Add \$7.50 min. for shipping and handling.

Indiana residents add 7% sales tax

$\frac{1}{4}$ " scale lost wax trolley parts by Robert E. Bruneau

U-1 Contactor case G.E.	\$6.00
U-2 Line switch G.E.	\$6.00
U-20 Resistance grid G.E. RG	\$2.50
U-21 Resistance grid G.E. CG	\$2.50
U-30 Headlight resistance box Crouse-Hinds	\$1.50
U-40 Motor cutout box	\$2.50
U-45 Insulator donuts	
U-50 Reverser G.E.RB-13	\$5.00
U-60 Fuse box (CSL)	\$1.50
U-61 Fuse box G.E. MA-19-A	\$2.50
U-70 Control jumper receptacle	\$1.50
U-71 Buss jumper receptacle	\$1.50
U-110 Air pump strainer Westinghouse	\$1.00
U-112 Brake chain sheave	\$1.50
U-115 Tank end welded 15"	\$2.00
U-116 Tank end recessed 15"	\$2.00
U-117 Tank end recessed 18"	\$2.00
U-150 Over truss anchor	\$1.50
U-151 Turnbuckle	
R-1 Stack (ITS)	\$3.00
R-10 Vent Utility round Jet $10\frac{1}{2}$ " dia.	\$2.00
R-11 Vent Utility round Jet $13\frac{1}{2}$ " dia.	\$2.00
R-12 Vent Utility intake	\$2.50
R-20 Horn Westinghouse ribbed 14"	\$
R-30 Lightning arrestor	
C-1 Headlight (CSL)	\$2.00
C-10 Retriever Earll	\$1.25
C-11 Retriever OB #5	\$1.25
C-15 Catcher (CSL)	\$1.50
C-16 Catcher OB	\$1.50
C-20 Marker light bracket	
C-21 Marker light receptacle	\$1.10
T-1 Freight car truck bolster finescale	\$5.25
T-2 Freight car truck spring plank finescale	\$1.10
T-10 Journal box $5\frac{1}{2}$ " x 10"	\$2.10
T-20 Journal box lid (CSL)	\$1.60
Brill MCB 6'4" truck used on ITS 1050 frt motor	pr \$96.00
Kit consists of 40 lost wax castings	
Alco 7'2" loco trucks used on ITS class B	
Kit consists of 16 lost wax castings	pr \$65.00

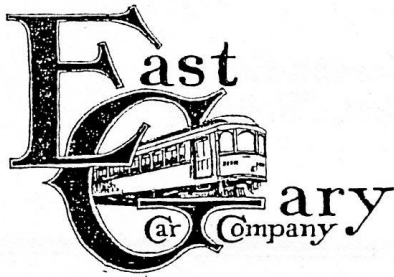
Truck kits do not include bolsters or springs as these will be determined by builder's track gauge (finescale or standard 0). Please allow 6-8 weeks shipping as parts are in short supply and supplier is slow.



3828 St. Joseph Court
Lake Station, IN 46405

East Gary Car Co. is now operating Ashland Car Works. We need plans for the bus, moving van, and Brill semi-convertible streetcar. All assistance is gratefully accepted. We are now offering parts for all Ashland kits. Let us know your needs,

Deck roof kit for street car	\$19.95
Underbody detail kit for wood interurbans	\$29.95
More to come	
1931 MACK BUS KIT	\$55.00

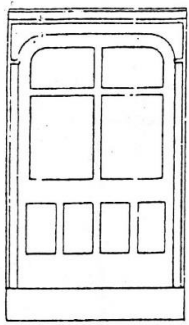


3828 St. Joseph Court
Lake Station, IN 46405

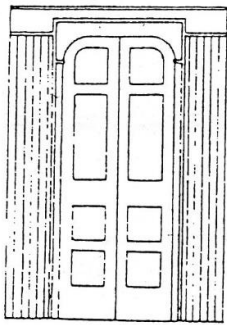
Made in the U.S.A.

East Gary Car Co. has retooled the former ICC parts #100, and #200. The tooling and parts are made in the U.S.A. Because of tooling constraints, it was necessary to leave out the groove on the back of the parts. Instead, the side panels were narrowed and do not need to be trimmed. This will make construction easier. If you need wide window posts, use scribed styrene.

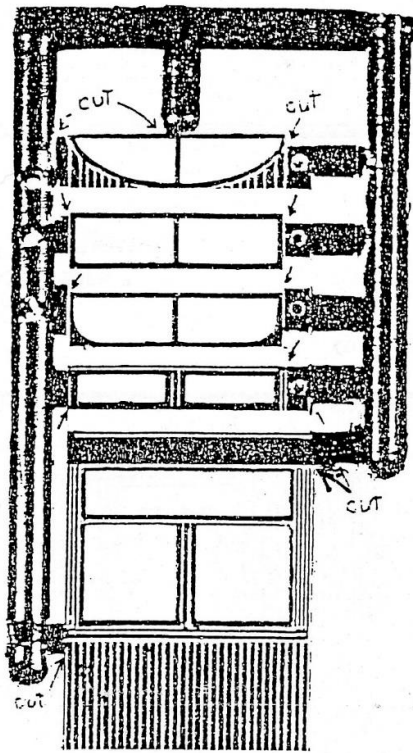
100 Side panel rectangular upper sash	\$3.00
200 Side panel arch upper sash	\$3.00
A-1 End very round	\$3.00
C-1 End flatter curve	\$3.00
C-2 End "	\$3.00
C-3 End "	\$3.00
E-9 End, railroad	\$3.00
102 Passenger door	\$1.75
103 Oval window panel	\$1.75
205 Three single arch window panel	\$2.50
V-9 Bulkhead	\$1.50



↑
Baggage Door
104

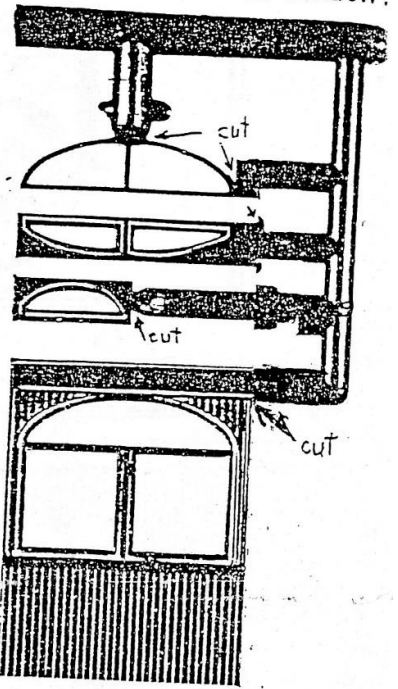


↑
Passenger Door
102



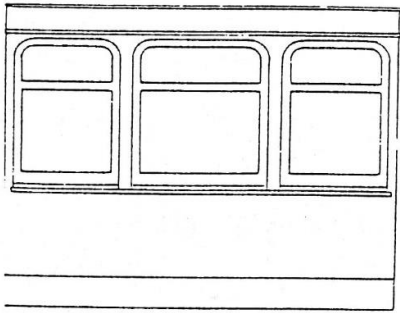
100 ↗

Part #200 is the classic arch window with the beading following the arch around the window.

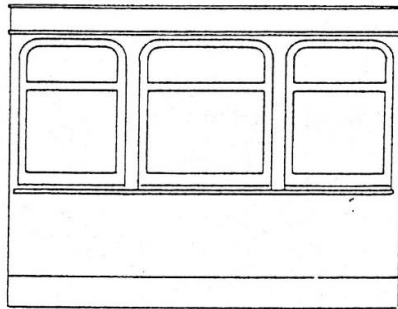


200 ↗

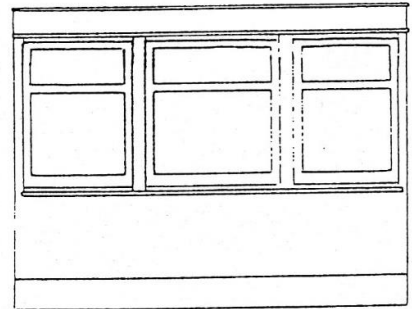
INTERURBAN END
(Medium curved)



↑
A1

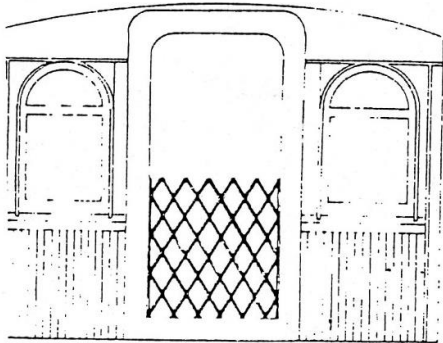


No. C-1 ↗



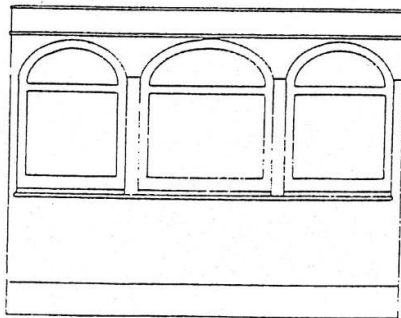
No. C-2 ↗

INTERURBAN END
(Slightly Curved)



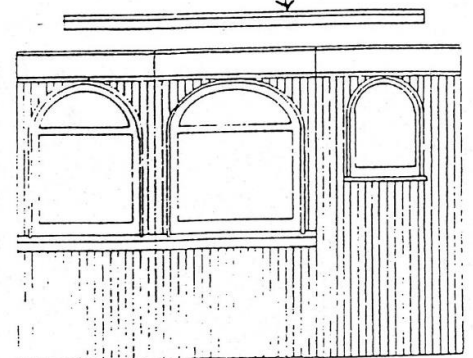
E-9 ↗

INTERURBAN END
(Slightly Curved)



No. C-3 ↗
INTERURBAN END
(Slightly Curved)

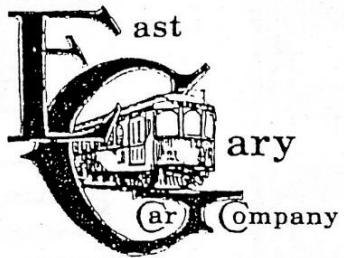
Optional Belt Rail ↗



↑
Three Single Arch Windows

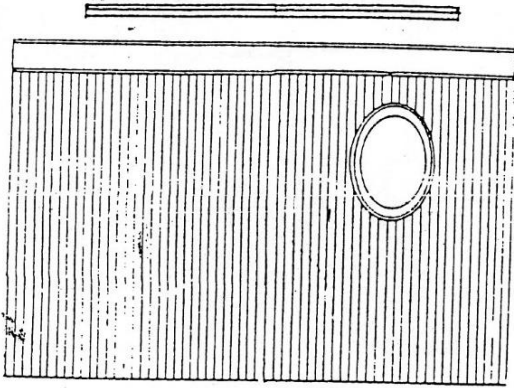
RAILROAD or M U
Car End

No. 205

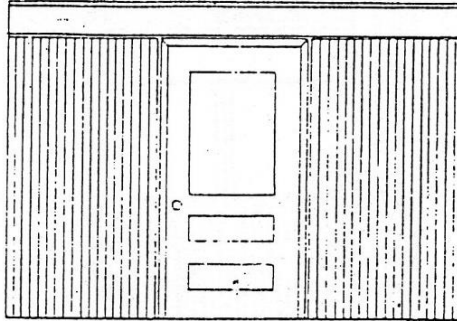


3828 St. Joseph Court
Lake Station, IN 46405

Optional Belt Rail



No. 103 ↗



V-9 ↗

Vest End

Vestibule or Bulkhead

Andrew Sundaland
TROLLEYMAN1100@YAHOO.COM
219 614 7165